



Grating Pacific, Inc.

TRACY, CA
800.491.7999LOS ALAMITOS, CA
800.321.4314

Grating Pacific, LLC

SEATTLE, WA
800.243.3939WOODBURN, OR
800.942.4041[Home](#)[About Us](#)[Products & Services](#)[Search](#)[Contact Us](#)

Trench Grating & Inlet Sets

More related links...

▶ [Trench Grating Systems](#)

▶ [Inlet Sets- Standard Duty Table](#)

▶ [Inlet Grates & Frames](#)

▶ [Inlet Sets- Heavy Duty Table](#)

Grating Pacific Trench Grating Systems and Inlet Sets combine our most popular gratings and embed frames to provide economic, modular components for construction projects. These products are offered in our **Standard** series, designed to serve pedestrian loads, and our **Heavy Duty** series, designed to service the most demanding vehicular traffic. Each series is offered with multiple bar spacings (shown below) to address the specific needs of your application.

BOLTED GRATES

Grating Pacific Trench Systems and Inlet Sets are manufactured as component products with the grates easily removed for clearing debris from the trenches or inlets. Often security concerns or traffic conditions dictate that the grates must be bolted to the framing. When this option is specified, weld lugs or counter-sunk lands ([below](#)) are installed on the grates and the bolt is installed below the traffic surface of the grating. For high security applications, bolted grates with tamper-resistant fasteners may be further specified.

STANDARD DUTY



TYPE "S"

Designed to support pedestrian loads, type "S" grates are manufactured from welded grating with durable 3/16" (min.) thick bearing bars. Open area of nearly 80% allows for fast clearing of moisture and run-off.



TYPE "SA"

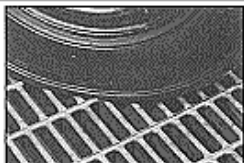
Standard Duty type "SA" grates are designed to conform with strict ADA spacing requirements. Open area of 66% allows for drainage and ventilation while maintaining a safe traffic surface.



TYPE "SP"

Type "SP" grates also comply with ADA spacing requirements. Additionally, the 1/4" maximum clear opening between the bars make these grates desirable in areas subject to pedestrian traffic where high heeled shoes are common.

HEAVY DUTY



TYPE "H"

Type "H" grates are manufactured from stout, 3/8" (min.) thick bearing bars. Designed to serve



TYPE "HA"

Heavy Duty type "HA" grates are similar to type "SA" above with the

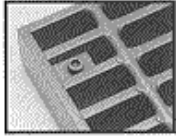


TYPE "HP"

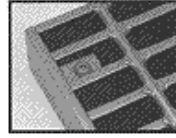
Heavy duty type "HP" grates are similar to type "SP" above with the exception that these

the most rigorous truck and forklift loads. With nearly 70% open area, these products are ideal for parking lot and highway drain applications. *exception that these grates are additionally designed to support forklift and vehicular loads.* *grates are additionally designed to support forklift and vehicular loads.*

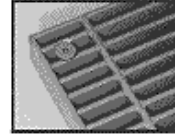
**BOLTING
OPTIONS:**



**BOLTED
GRATES**



**TAMPER
RESISTANT
BOLT**



**CLOSE
MESH
BOLTING**